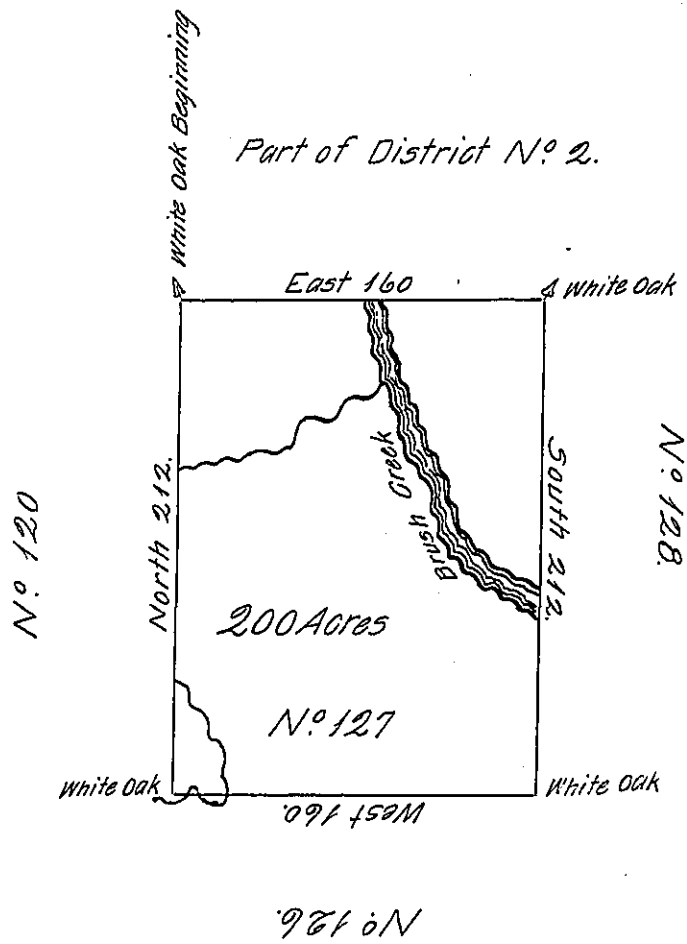


✓



The above is a Draught of a Survey made in the month of July 1785 in Pursuance of Instructions from the Surveyor General situate on the North side of the Ohio River on the waters of Brush Creek in District No. 2. Containing Two Hundred ~~and Thirty~~ Acres with the Usual Allowance 6 P. Cent.

Danl. Leet D.S.

John Lukens Esq. Surv. Genl.

IN TESTIMONY that the above is a copy of the original remaining on file in the Department of Internal Affairs of Pennsylvania, made conformably to an Act of Assembly approved the 16th day of February, 1833, I have hereunto set my Hand and caused the Seal of said Department to be affixed at Harrisburg, this fourteenth day of November 1905.

*Loac J. Brown*  
Secretary of Internal Affairs.